

Paper Reference(s) 1BI0/2H  
Pearson Edexcel Level 1/Level 2 GCSE (9–1)

Biology  
PAPER 2  
Higher Tier

Friday 7 June 2024 – Afternoon

Time: 1 hour 45 minutes

Diagram Booklet

THIS DIAGRAM BOOKLET MUST BE RETURNED WITH THE QUESTION PAPER AT THE END OF THE EXAMINATION.

In the boxes below, write your name, centre number and candidate number.

Surname					
Other names					
Centre Number					
Candidate Number					

## **INSTRUCTIONS**

**There may be spare copies of some diagrams in case you need them.**

## **CONTENTS**

### **Page**

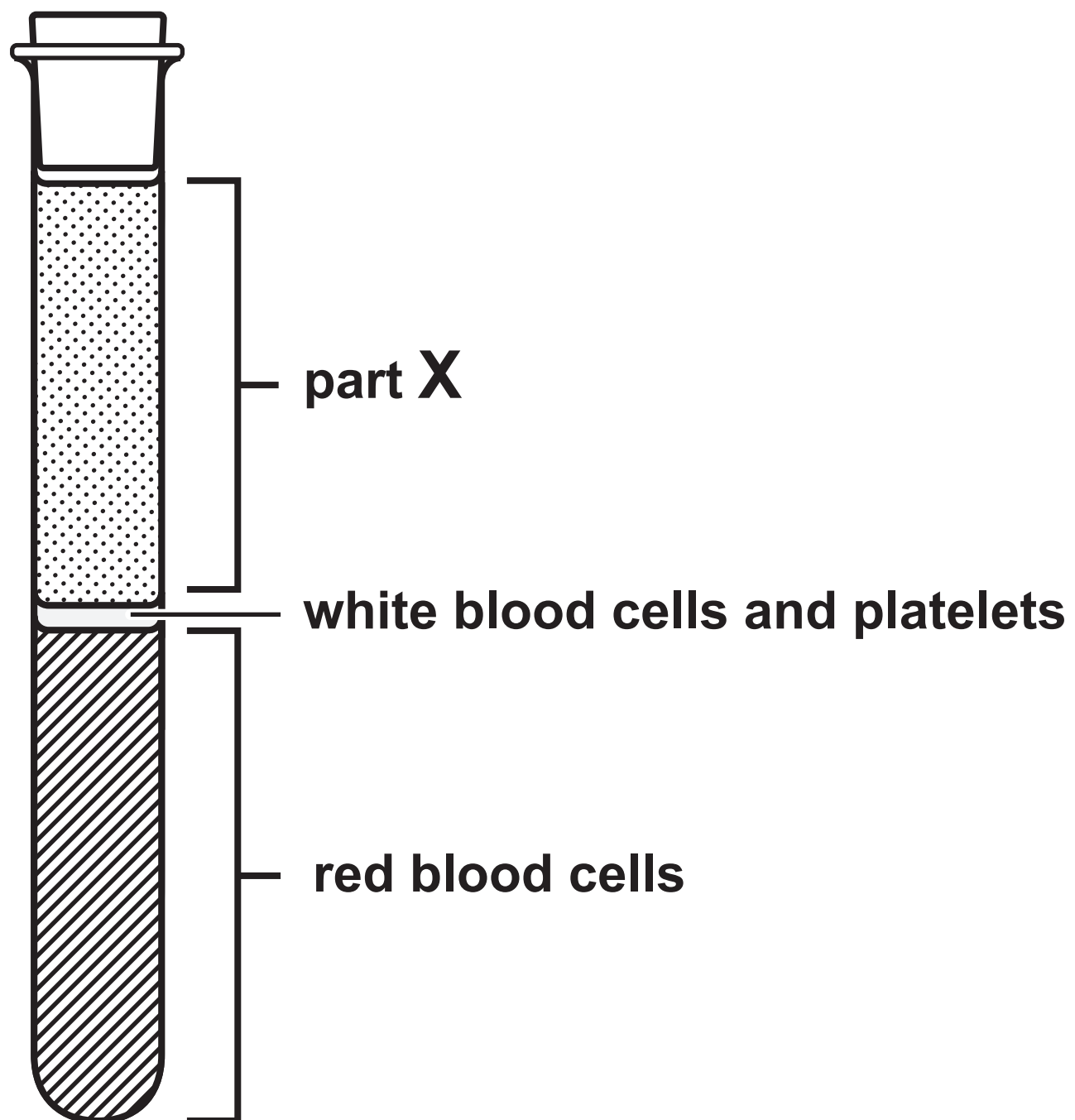
<b>3</b>	<b>Question 2</b>
<b>4</b>	<b>Question 3(a)</b>
<b>5</b>	<b>Question 3(b)</b>
<b>6</b>	<b>Question 4(b)</b>
<b>7</b>	<b>Question 4(e)</b>
<b>8</b>	<b>Question 5(a)(iii)</b>
<b>9</b>	<b>Question 6(b)</b>
<b>10</b>	<b>Question 7(b)</b>
<b>11</b>	<b>Question 8(a)</b>
<b>12</b>	<b>Question 8(b)</b>
<b>13</b>	<b>Question 10(a)</b>
<b>14</b>	<b>Question 10(b)</b>

### **Spare Copies**

<b>15</b>	<b>Question 8(a)</b>
-----------	----------------------

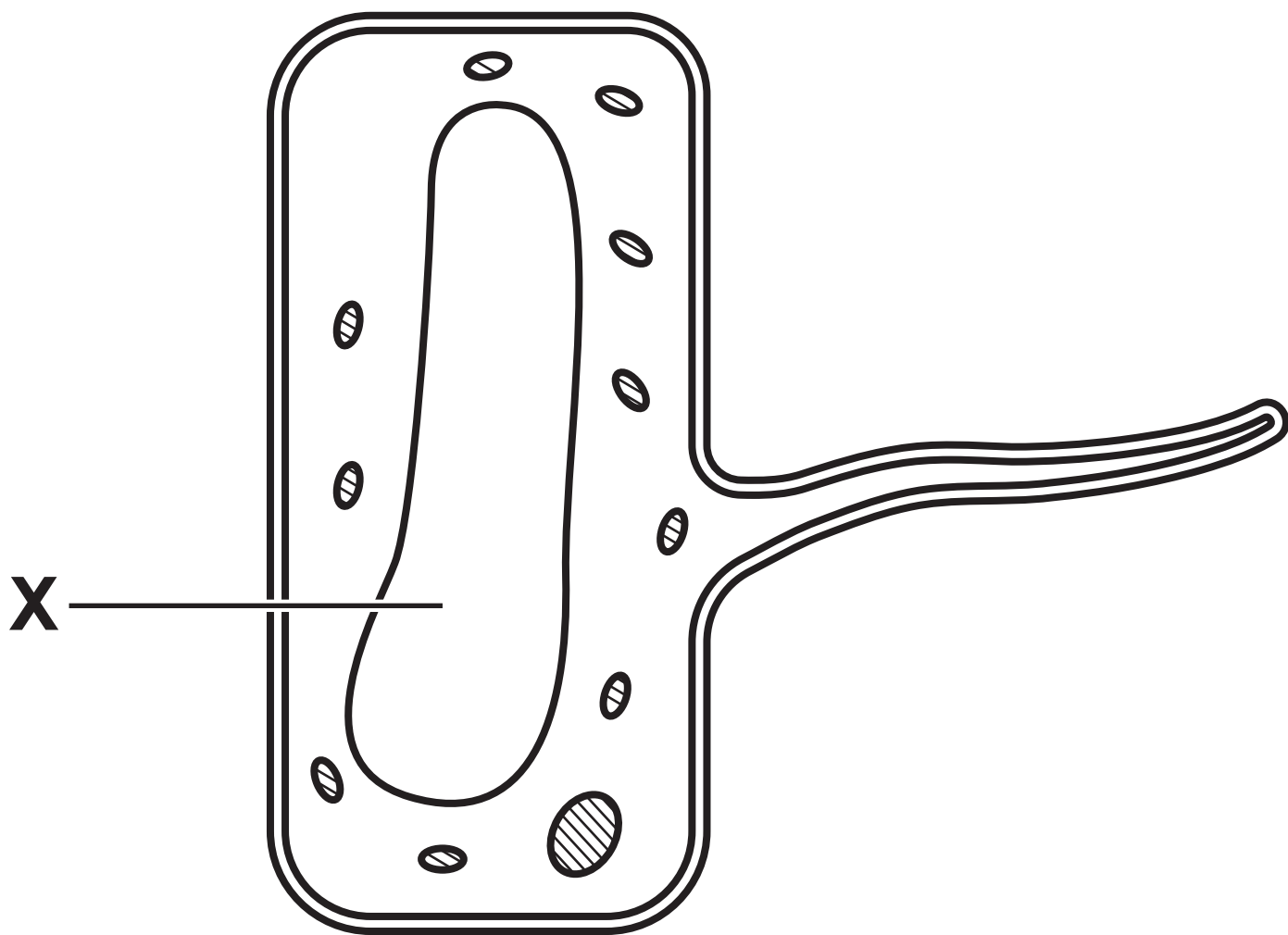
## Question 2

FIGURE 1



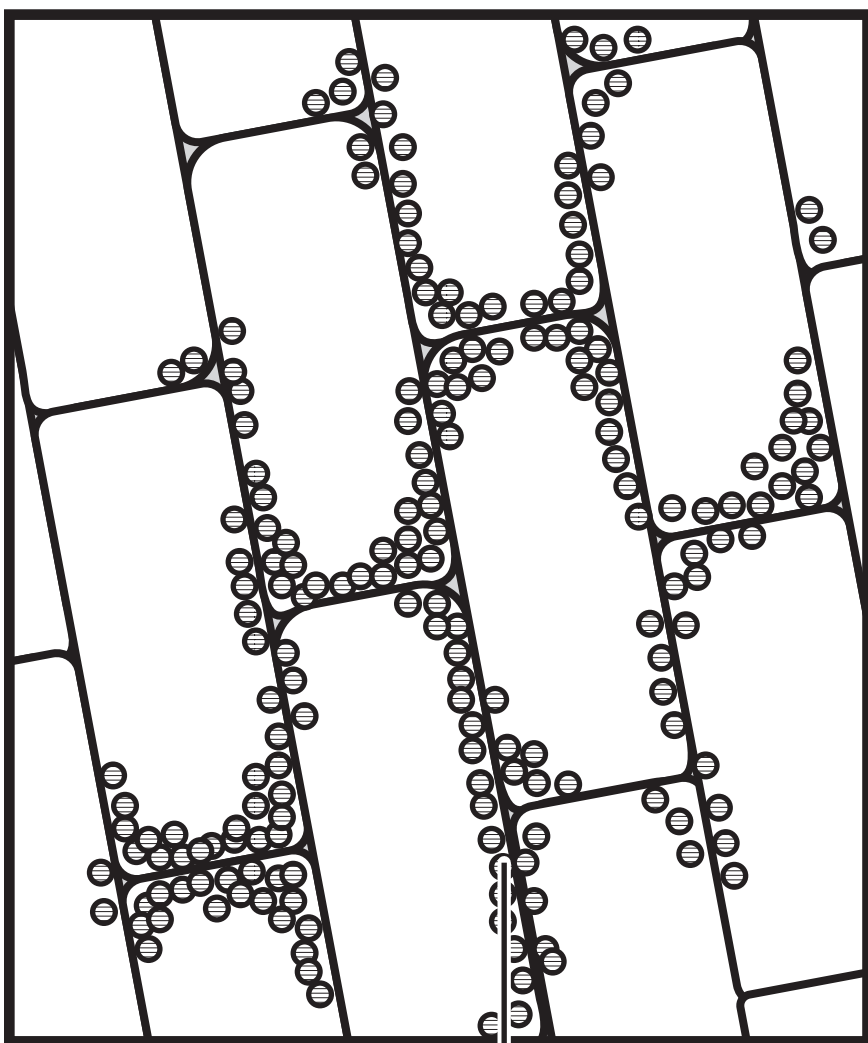
## Question 3(a)

FIGURE 2

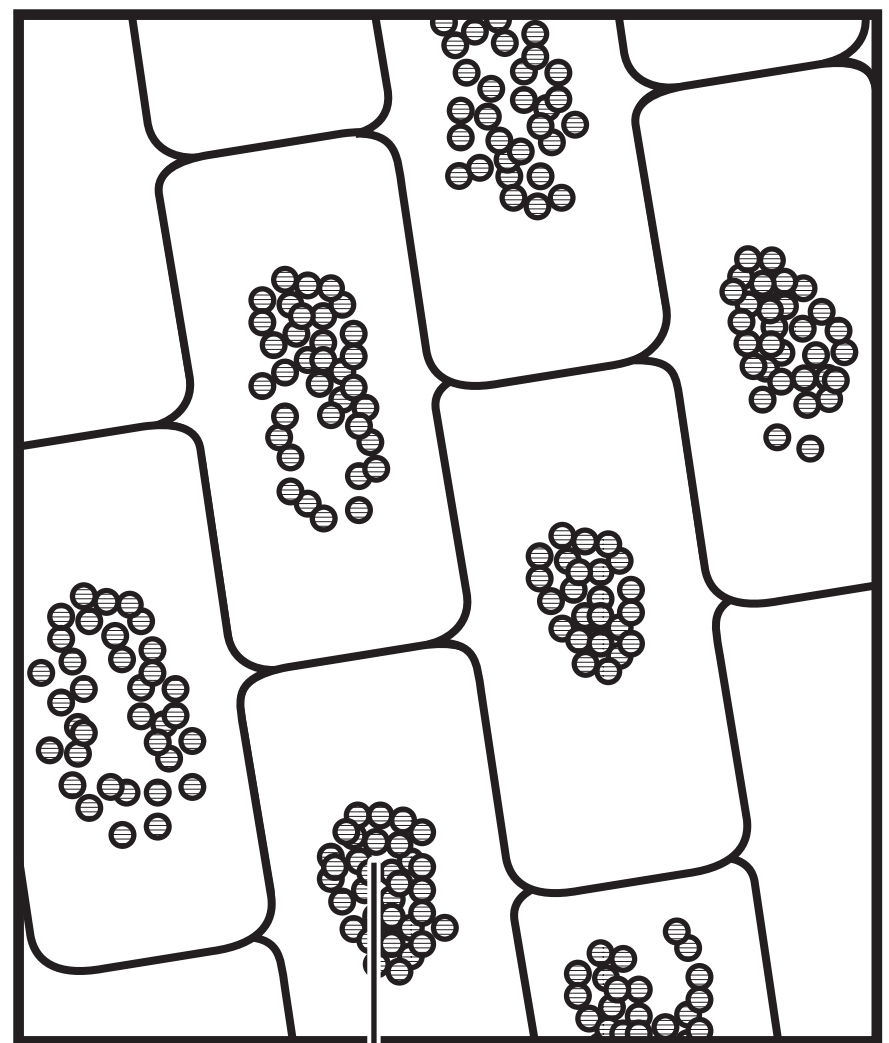


## Question 3(b)

FIGURE 3

**Elodea cells in tap water**

chloroplasts

**Elodea cells in 10% salt solution**

chloroplasts

Question 4(b)

FIGURE 4

time in days	mass of leaves in grams	
	holly	oak
0	200	200
10	191	181
20	176	154
30	159	122
40	147	96
50	120	70

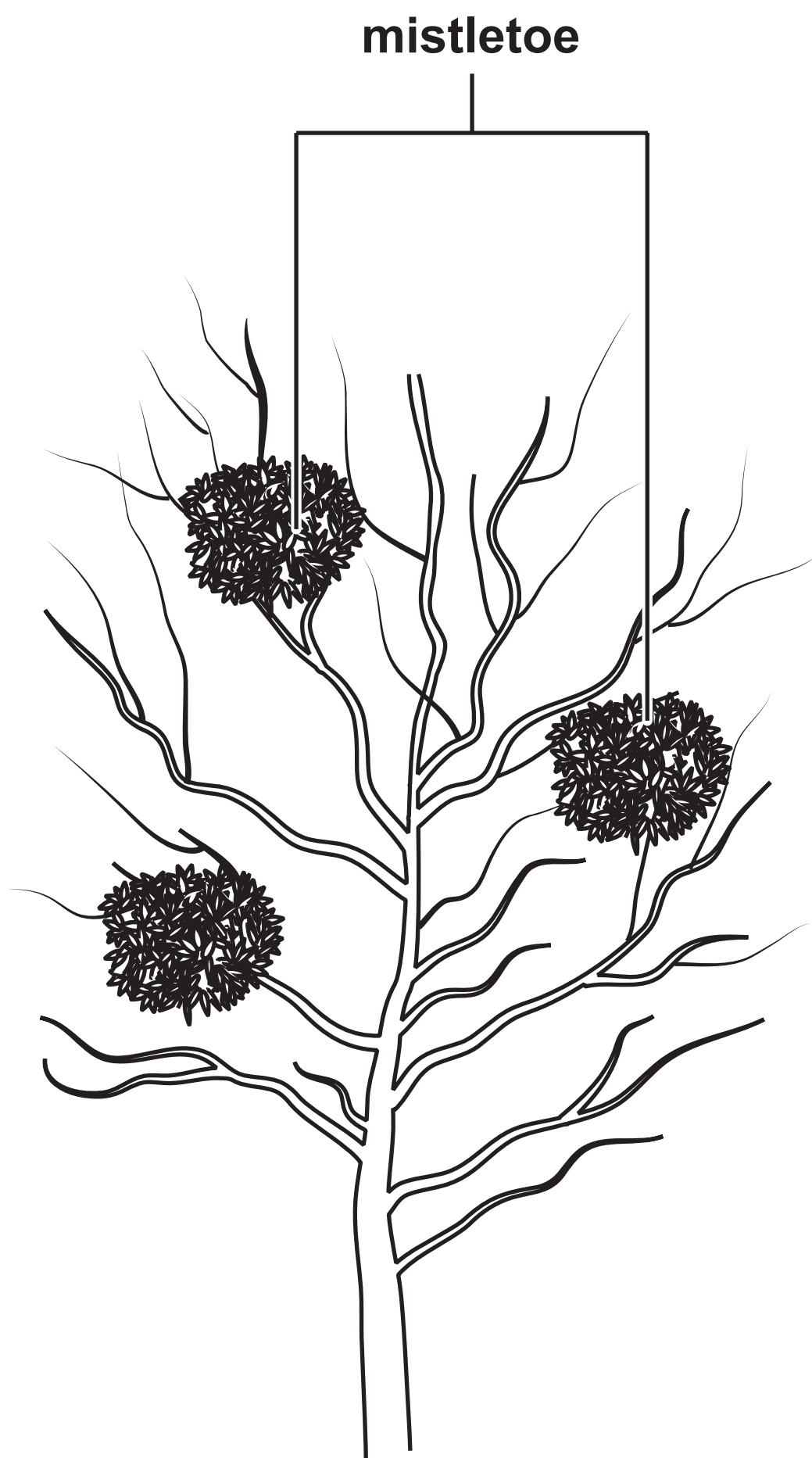
Question 4(e)

FIGURE 5

mass in grams		
	at start of month	at end of month
leaves	1 600	400
snails	200	320

## Question 5(a)(iii)

FIGURE 6





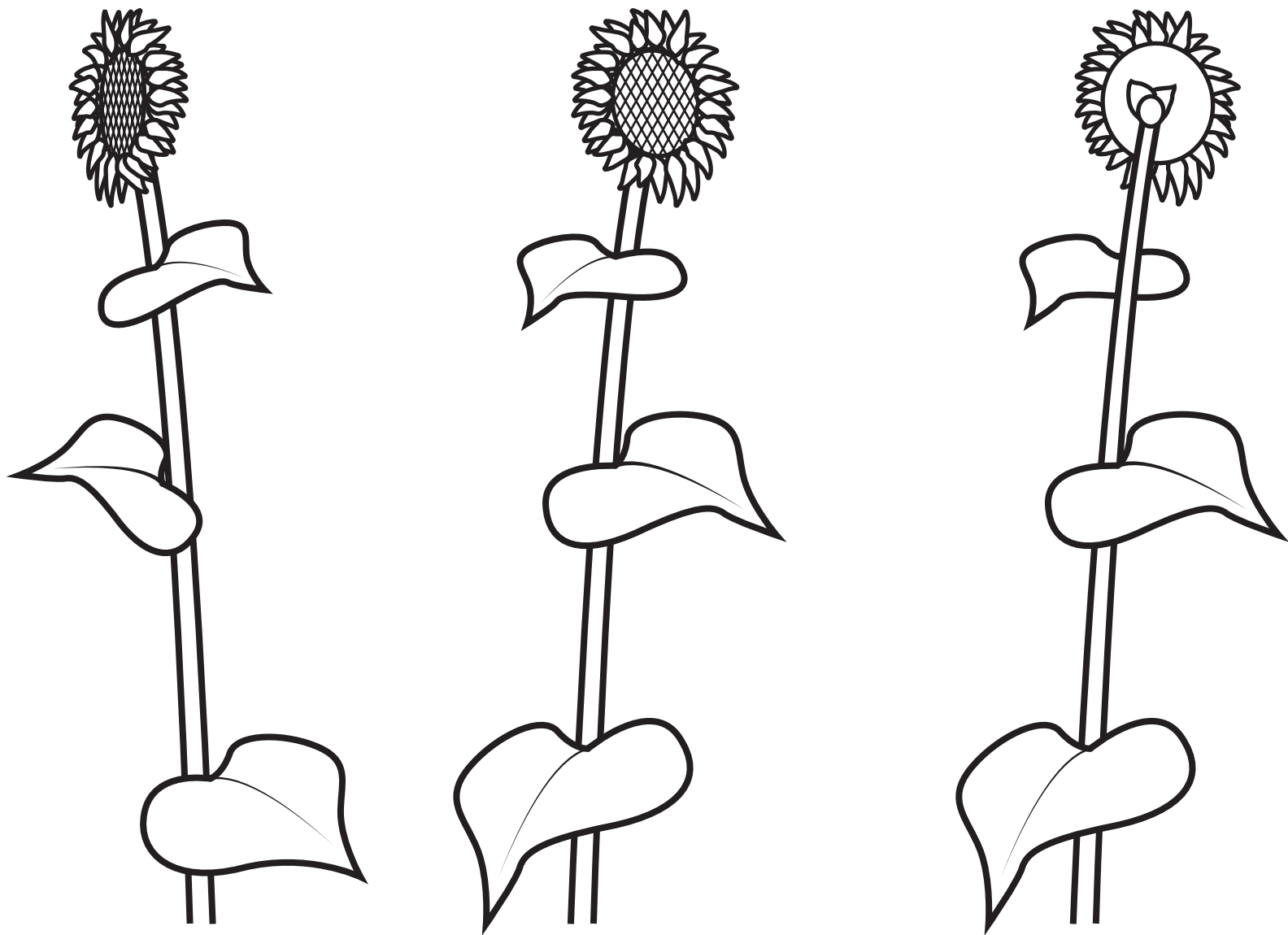
Question 6(b)

FIGURE 7

glucose concentration (%)	height of foam after 5 mins in mm
5	2
10	5
15	3
20	9
25	11

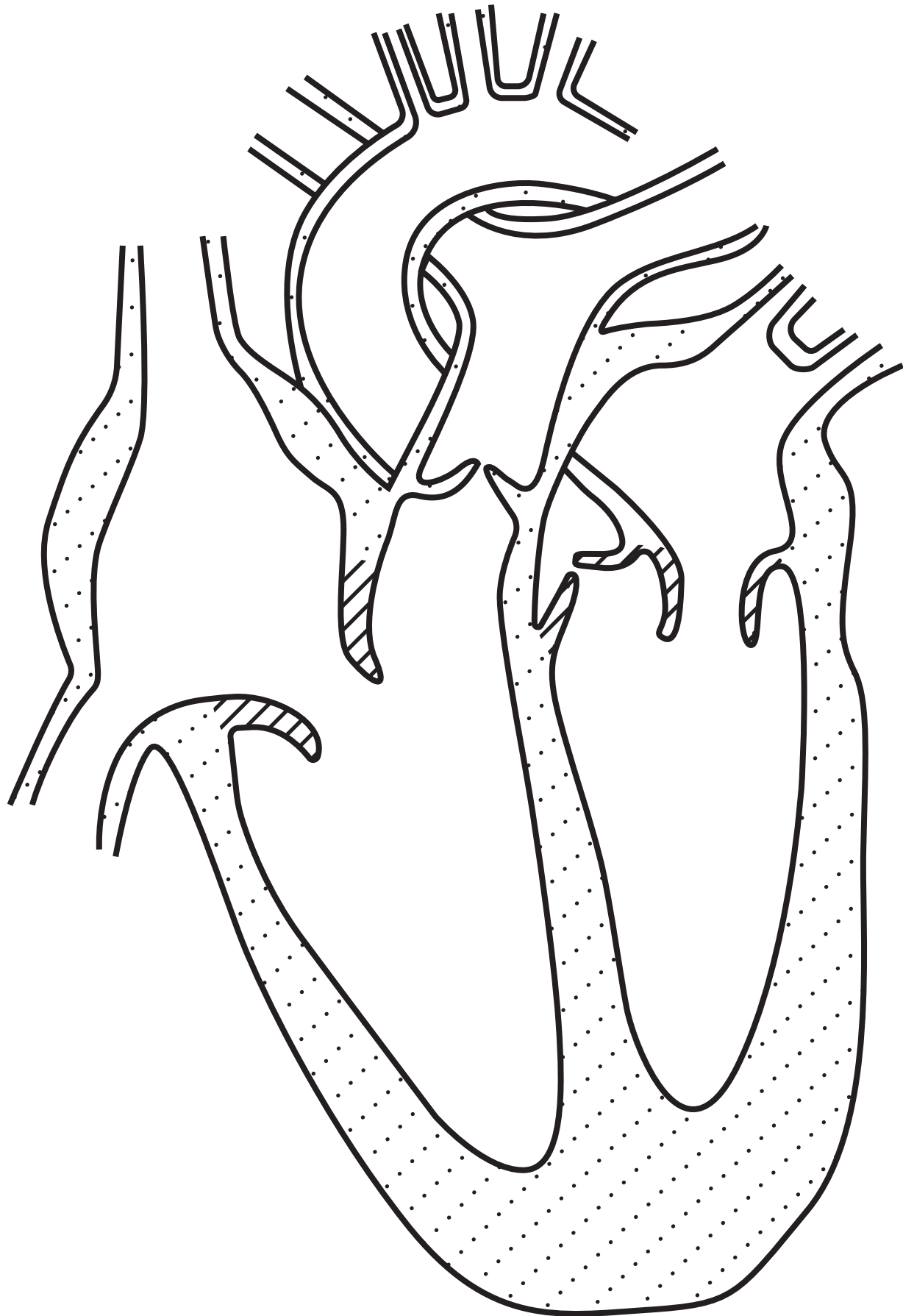
Question 7(b)

FIGURE 8



## Question 8(a)

FIGURE 9

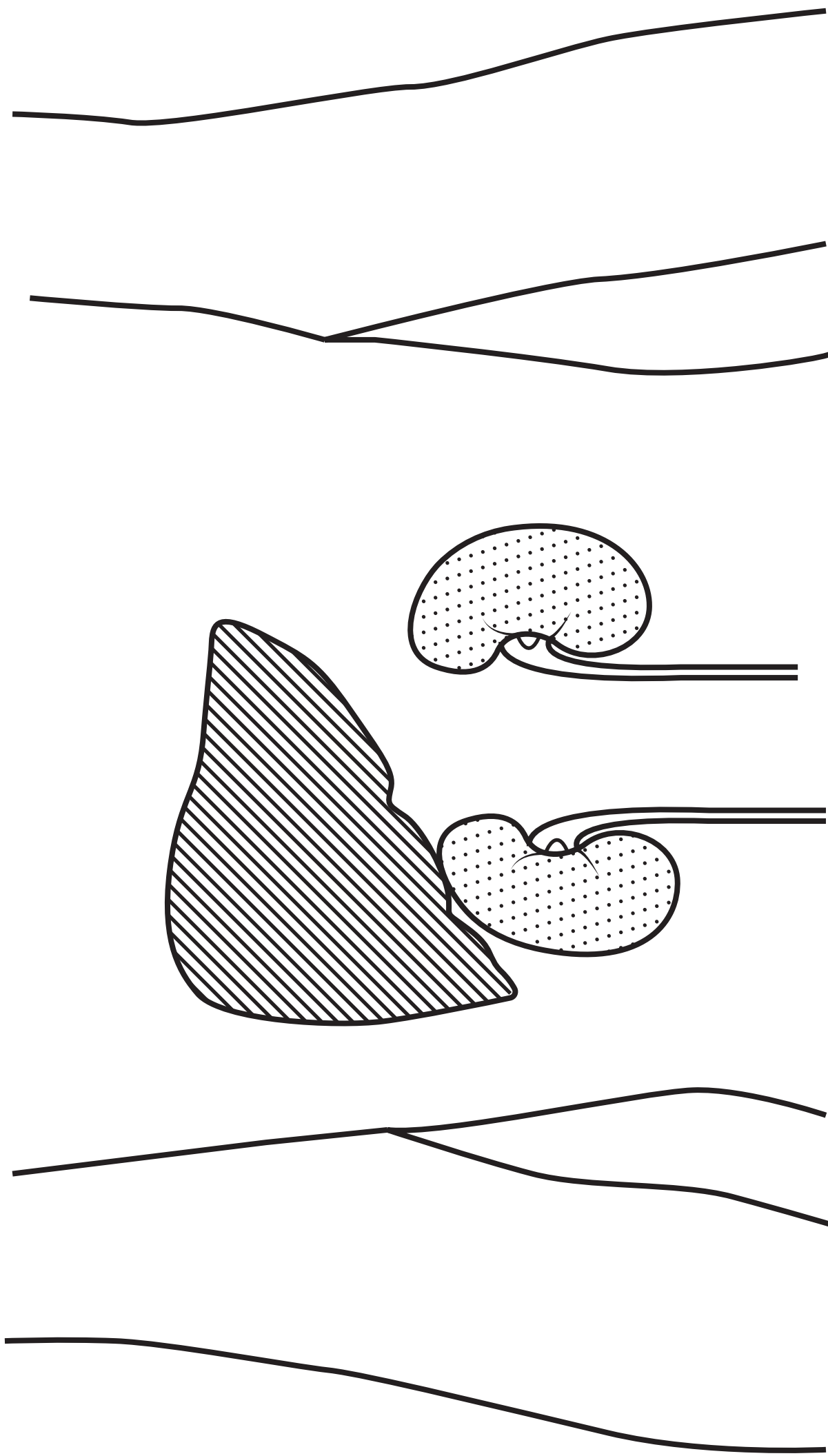


Question 8(b)

FIGURE 10

level of activity	heart rate in beats per minute	stroke volume in cm <sup>3</sup>
at rest	68	72
during exercise	112	124

FIGURE 11



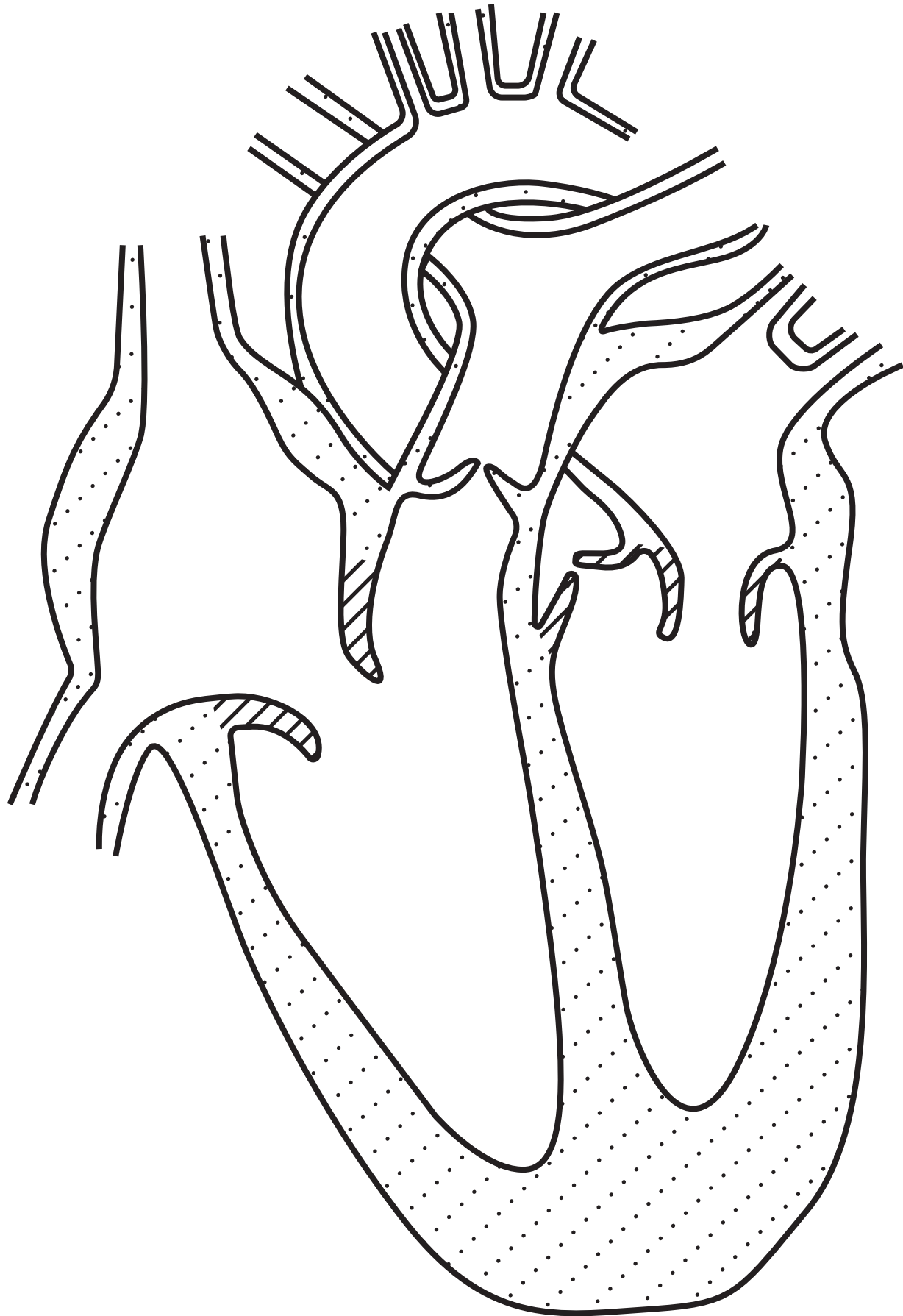
Question 10(b)

FIGURE 12

substance	concentration of substances in urine	
	person A	person B
protein	0 g per dm <sup>3</sup>	0 g per dm <sup>3</sup>
glucose	0 mmol per l	0·2 mmol per l
urea	28 g per dm <sup>3</sup>	12 g per dm <sup>3</sup>

## Question 8(a)

FIGURE 9



**Question 5(a)(iii)**

**(Source adapted from: © NagyDodo/Shutterstock)**

**Question 7(b)**

**(Source adapted from: © yevgeniy11/Shutterstock)**

**Question 10(a)**

**(Source adapted from: © Magic mine/Shutterstock)**